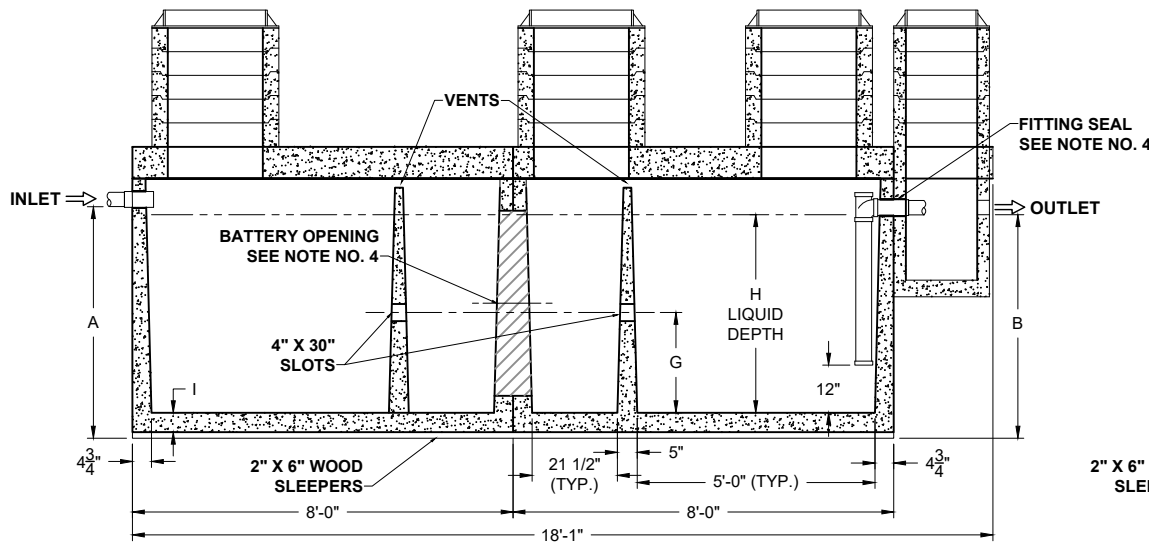
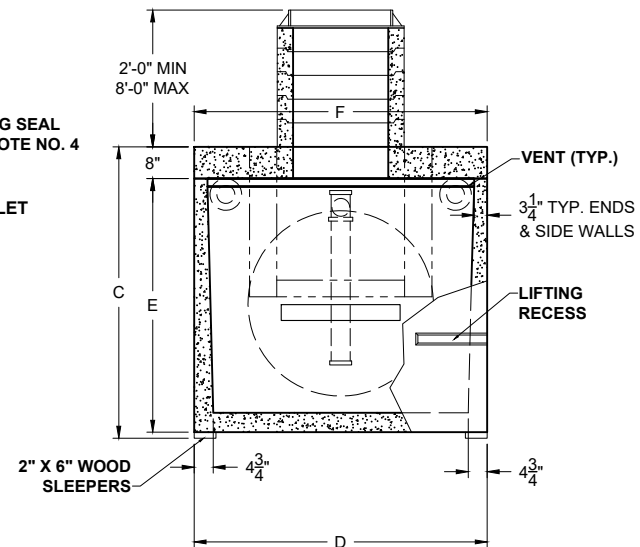


PLAN VIEW



SECTION THRU "A-A"



SECTION THRU "B-B"

(3) COMPARTMENTS

ALL DIMENSIONS ARE IN INCHES & WEIGHTS IN LBS - (RISER WT. NOT INCLUDED)										EXCAVATION SPECIFICATIONS				
MODEL	A	B	C	D	E	F	G	H	I	WEIGHT	LENGTH	WIDTH	BELOW INLET	TANK HEIGHT
PC SG-2-2000-HD	50	48	55	74	55	74	24 3/4	41 1/2	4 1/2	29,020	21'-0"	9'-2"	4'-2"	5'-5"
PC SG-2-2500-HD	59	57	74	74	64	74	29 3/4	50 1/2	4 1/2	31,450	21'-0"	9'-2"	4'-11"	6'-2"
PC SG-2-3000-HD	62 1/2	60 1/2	77 1/2	85	67 1/2	85	30 3/4	53 1/2	5	36,690	21'-0"	10'-1"	5'-2 1/2"	6'-5 1/2"

PRODUCT NAME:
SAND & GREASE INTERCEPTOR

DESCRIPTION:
**WITH THREE COMPARTMENTS
2000 THRU 3000 GALLONS**

DESIGN SPECIFICATIONS
DESIGN LOAD: **H-20 TRAFFIC RATED**

WITH DRY SOIL CONDITIONS (WATER LEVEL BELOW TANK). SUITABLE SUB-BASE BEDDED WITH GRANULAR MATERIAL SHALL BE PREPARED TO HANDLE ANTICIPATED LOADS. FOR COMPLETE DESIGN AND PRODUCT INFORMATION, PLEASE CONTACT PRO-CAST PRODUCTS.

PRO-CAST PRODUCTS RESERVES THE RIGHT TO MAKE CHANGES TO PRODUCT DESIGN AND/OR DIMENSIONS WITHOUT NOTICE. PLEASE CONTACT PRO-CAST PRODUCTS WHENEVER NECESSARY FOR CONFIRMATION OR ADVICE ON PRODUCT DESIGN.

- NOTES:
- (NOT USED)
 - REFER TO SPECIFICATION SHEET NOS. S-251 & S-252
 - REFER TO SPECIFICATION SHEET NO. S-201
 - REFER TO SPECIFICATION SHEET NO. S-250

SCALE: **DO NOT SCALE**
DRAWN BY: **TPC 12.20.2024**
REVISED BY:
CHECKED BY:

DRAWING NO.
SG-007